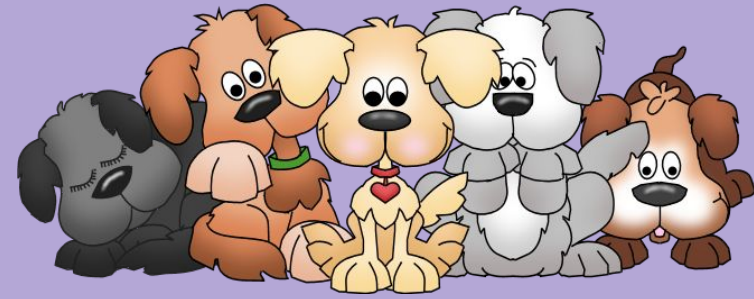




February 12th - 16th



## MATH

- ★ We will finish reviewing and practicing interpreting remainders.

Check Planners for a QUIZ date!

- ★ We will begin Fractions.


Vocabulary to Know:

- |            |               |
|------------|---------------|
| 1.dividend | 5.numerator   |
| 2.divisor  | 6.denominator |
| 3.quotient | 7.equivalent  |
| 4.reminder |               |

## Google Apps

- ★ We will finish enhancing a Google Doc.
- ★ We will animate a Google Slide.

## IMPORTANT REMINDERS:

- ★ Please continue to check the Daily Folder and Planner for important information !
- ★ Valentine Party - Wednesday, February 14th 
- ★ NO SCHOOL! - Monday, February 19th

# Mrs. Wilson's LESSON PLANS

## Week of February 12th - 16th

\*Lesson Plans are Subject to Change\*



	MONDAY February 12th 6 C	TUESDAY February 13th 1 A	WEDNESDAY February 14th 2 B	THURSDAY February 15th 3 C	FRIDAY February 16th 4 A
MATH	<p>O:TSWBAT</p> <ul style="list-style-type: none"> <li>-Divide multi digit numbers with remainders</li> <li>-Define vocabulary related to division</li> <li>-Interpret Remainders</li> </ul> <p>A:</p> <ul style="list-style-type: none"> <li>★ Mad Minutes</li> <li>★ POTD</li> <li>★ Interpreting Remainders Practice</li> </ul> <p>E: student responses</p>	<p>O:TSWBAT</p> <ul style="list-style-type: none"> <li>-Divide multi digit numbers with remainders</li> <li>-Define vocabulary related to division</li> <li>-Interpret Remainders</li> </ul> <p>A:</p> <ul style="list-style-type: none"> <li>★ Mad Minutes</li> <li>★ POTD</li> <li>★ Interpreting Remainders Review &amp; Study Guide</li> </ul> <p>E: student responses</p>	<p>O:TSWBAT</p> <ul style="list-style-type: none"> <li>-Divide multi digit numbers with remainders</li> <li>-Define vocabulary related to division</li> <li>-Interpret Remainders</li> </ul> <p>A:</p> <ul style="list-style-type: none"> <li>★ Mad Minutes</li> <li>★ POTD</li> <li>★ Interpreting Remainders Study Guide</li> </ul> <p>E: student responses</p>	<p>O:TSWBAT</p> <ul style="list-style-type: none"> <li>-Divide multi digit numbers with remainders</li> <li>-Define vocabulary related to division</li> <li>-Interpret Remainders</li> </ul> <p>A:</p> <ul style="list-style-type: none"> <li>★ Mad Minutes</li> <li>★ POTD</li> <li>★ Interpreting Remainders QUIZ</li> </ul> <p>E: student scores</p>	<p>O:TSWBAT</p> <ul style="list-style-type: none"> <li>-Define vocabulary related to fractions</li> </ul> <p>A:</p> <ul style="list-style-type: none"> <li>★ Mad Minutes</li> <li>★ POTD</li> <li>★ Fraction Vocabulary</li> </ul> <p>E: student responses</p>
Extra/Google Apps	<p>O:TSWBAT</p> <ul style="list-style-type: none"> <li>-gain understanding of Google Apps.</li> </ul> <p>A:</p> <ul style="list-style-type: none"> <li>★ Finish Enhancing Google Docs</li> <li>★ Animate a Google Slide</li> </ul> <p>E: student responses</p>	<p>O:TSWBAT</p> <ul style="list-style-type: none"> <li>-gain understanding of Google Apps.</li> </ul> <p>A:</p> <ul style="list-style-type: none"> <li>★ Finish Enhancing Google Docs</li> <li>★ Animate a Google Slide</li> </ul> <p>E: student responses</p>	<h3>Valentine Party</h3>	<p>O:TSWBAT</p> <ul style="list-style-type: none"> <li>-gain understanding of Google Apps.</li> </ul> <p>A:</p> <ul style="list-style-type: none"> <li>★ Finish Enhancing Google Docs</li> <li>★ Animate a Google Slide</li> </ul> <p>E: student responses</p>	<p>O:TSWBAT</p> <ul style="list-style-type: none"> <li>-gain understanding of Google Apps.</li> </ul> <p>A:</p> <ul style="list-style-type: none"> <li>★ Finish Enhancing Google Docs</li> <li>★ Animate a Google Slide</li> </ul> <p>E: student responses</p>

\*Lesson Plans meet requirements of the Rockwood Area School District Curriculum & PA State Standards for 4th Grade.

\*Accommodations & Modifications included but not limited to: follow IEPs & GIEPS, differentiated instruction, preferential seating, opportunities for intervention or enrichment, & challenge activities at teacher's discretion.